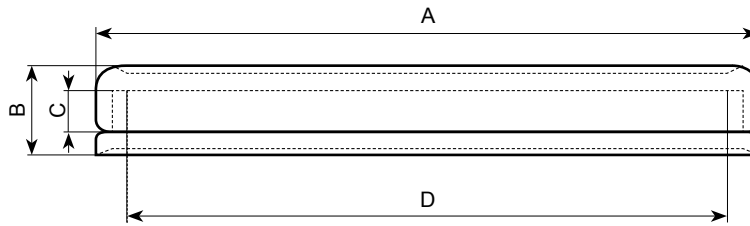


CAPSULE PER MONETE E MEDAGLIE

CAPSULES FOR COINS AND MEDALS



DIAMETRO INTERNO MM (D) / DIAMETER INTERNAL (D)									
10,3	16,5	16,0	28,8	16,5	40,4	50,3	85,0	90,0	
12,5	20,2	16,5	29,2	22,6	41,2	60,2	90,0		
15,2	21,6	17,3	30,0	28,0	42,2	65,0	94,0		
16,2	22,5	18,4	31,5	29,5	43,2	70,0			
17,3	23,8	19,0	32,0	30,2	44,2				
18,2		20,0	33,0	31,2	45,0				
19,5		21,2	34,5	31,7					
		22,0	35,5	32,2					
		23,0		32,5					
		23,9		33,2					
		24,2		34,2					
		25,0		35,1					
		26,0		35,3					
		27,0		36,0					
		28,0		37,0					
		29,5		38,0					
				39,0					
				40,0					
				40,3					
Diametro Esterno mm (A)	23,0	28,0	33,0	40,8	44,5	49,5	76,0	98,0	98,0
Spessore Esterno mm (B)	5,5	5,5	5,5	6,9	6,8	7,1	13,3	13,0	19,2
Spessore Interno mm (C)	2,1	2,1	2,1	3,2	3,2	3,9	5,42	9,0	16,0

Diametro delle monete circolanti in mm / Diameter of rynnig coins		
1 Cent.	Diametro Esterno 23 mm / Diametro Interno 16,2 mm	cod.2210
2 Cent.	Diametro Esterno 23 mm / Diametro Interno 19,5 mm	cod.2790
5 Cent.	Diametro Esterno 28 mm / Diametro Interno 21,6 mm	cod.2100
10 Cent.	Diametro Esterno 28 mm / Diametro Interno 20,1 mm	cod.1950
20 Cent.	Diametro Esterno 28 mm / Diametro Interno 22,5 mm	cod.1960
50 Cent.	Diametro Esterno 33 mm / Diametro Interno 24,2 mm	cod.2570
1 Euro	Diametro Esterno 33 mm / Diametro Interno 23,9 mm	cod.1760
2 Euro	Diametro Esterno 33 mm / Diametro Interno 26,0 mm	cod.1780